

Non-Profit Org.
U.S. Postage Paid
New York, NY
Permit No. 8876

The Page and William Black Post Graduate School
One Gustave L. Levy Place
Box 1193
New York, NY 10029-6574



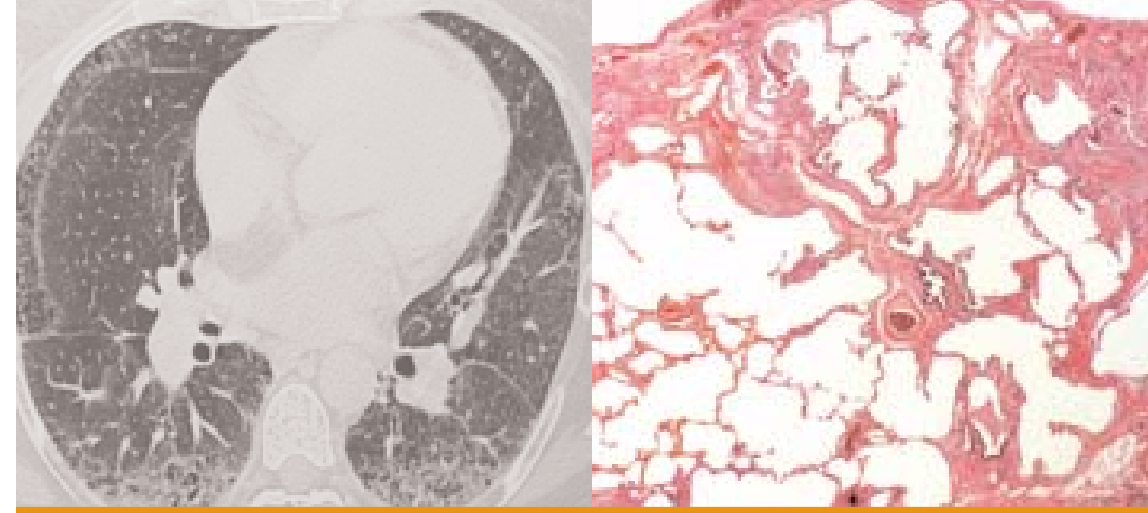
MOUNT SINAI
SCHOOL OF
MEDICINE

**Advanced Lung Disease
and Lung Transplantation Symposium**
Saturday, September 29, 2007
New York Marriott Marquis
Marquis Ballroom, 9th Floor
1535 Broadway (46th & Broadway)
New York, NY 10036



MOUNT SINAI
SCHOOL OF
MEDICINE

Advanced Lung Disease and Lung Transplantation Symposium



Saturday, September 29, 2007
New York Marriott Marquis
Marquis Ballroom, 9th Floor
1535 Broadway (46th & Broadway)
New York, NY 10036

Course Directors:
Maria L. Padilla, MD
Virginia R. Litle, MD
Lori Shah, MD

Sponsored by
Division of Pulmonary, Critical Care
and Sleep Medicine
Department of Medicine
Department of Cardiothoracic Surgery
Mount Sinai School of Medicine

Advanced Lung Disease and Lung Transplantation Symposium

Saturday, September 29, 2007
New York Marriott Marquis
New York, NY 10036

Course Co-Directors

Maria L. Padilla, MD
Professor of Medicine
Medical Director,
Lung Transplantation Program
Director, Advanced Lung Disease Program
Division of Pulmonary, Critical Care
and Sleep Medicine
The Mount Sinai Medical Center

Virginia R. Litle, MD
Assistant Professor of Surgery
Transplant Surgeon
Department of Cardiothoracic Surgery
The Mount Sinai Medical Center

Lori Shah, MD
Assistant Professor of Medicine
Associate Director,
Lung Transplantation Program
Division of Pulmonary, Critical Care
and Sleep Medicine
The Mount Sinai Medical Center

Mount Sinai Faculty

Nathan Goldstein, MD
Assistant Professor of Medicine
Co-Director, Integrated Geriatrics/
Palliative Care and Heme-Onc/
Pall Care Fellowship
Brookdale Department of Geriatrics and
Adult Development
The Mount Sinai Medical Center

Timothy J. Harkin, MD
Assistant Professor of Medicine
Clinical Director, Division of Pulmonary,
Critical Care and Sleep Medicine
Director of Bronchoscopy
The Mount Sinai Medical Center

Scott J. Swanson, MD
The Eugene W. Friedman, MD,
Professor of Surgical Oncology
Chief, Division of Thoracic Surgery
The Mount Sinai Medical Center

Guest Faculty

Fernando Martinez, MD
Professor of Internal Medicine
Department of Medicine
University of Michigan School of Medicine

David Naidich, MD
Professor of Radiology and Medicine
Department of Radiology
New York University Medical Center

Steven Nathan, MD
Medical Director, Lung Transplant Program
& Advanced Lung Disease Program
Heart and Lung Transplant Center
Inova Heart and Vascular Institute
Fairfax, Virginia

William D. Travis, MD
Professor of Pathology
Department of Pathology
Memorial Sloan-Kettering Cancer Center

Faculty Disclosure

It is the policy of MSSM to ensure objectivity, balance, independence, transparency, and scientific rigor in all CME-sponsored educational activities. All faculty participating in the planning or implementation of a sponsored activity are expected to disclose to the audience any relevant financial relationships and to assist in resolving any conflict of interest that may arise from the relationship. Presenters must also make a meaningful disclosure to the audience of their discussions of unlabeled or unapproved drugs or devices. This information will be available as part of the course materials.

Statement of Needs

This one day symposium will both review and provide state-of-the-art updates regarding the pathophysiology, evaluation, diagnosis, and management of patients with advanced lung diseases. The symposium will emphasize novel therapies including new pharmacologic agents and recent advances in minimally invasive bronchoscopic and surgical procedures and lung transplantation.

In addition, the symposium will highlight the distinctive clinical, radiographic and pathologic features of the different types of advanced lung diseases, with special attention to potentially modifiable co-morbid conditions. This will allow for improved monitoring, treatment protocols and outcomes as well as more timely referrals for novel therapies, surgical procedures and lung transplantation.

Educational Objectives

Idiopathic pulmonary fibrosis (IPF), chronic obstructive pulmonary disease (COPD), cystic fibrosis (CF) and sarcoidosis comprise the majority of advanced lung diseases (ALD) in the United States and also represent the most common indications for lung transplantation. At the conclusion of this symposium, the participant should be able to:

- 1 Identify the common causes of Advanced Lung Disease.
- 2 Recognize the clinical, radiographic, and pathologic findings of the most common Advanced Lung Diseases.
- 3 Evaluate co-morbidities of Advanced Lung Diseases and determine appropriate therapeutic interventions.
- 4 Evaluate and compare the different therapeutic options for treatment of advanced COPD including bronchial valves.
- 5 Recognize the optimal timing for lung transplantation referral.
- 6 Understand the pre-transplant evaluation process, current lung allocation system, medical and surgical complications and outcomes after lung transplantation.

Target Audience

Pulmonologists, Thoracic Surgeons, Internists, Thoracic Physician Assistants and Allied Nursing Professionals

Accreditation

The Mount Sinai School of Medicine is accredited by the Accreditation Council for Continuing Medical Education to provide continuing medical education for physicians.

The Mount Sinai School of Medicine designates this educational activity for a maximum of 6.50 *AMA PRA Category 1 Credit (s)*[™]. Physicians should only claim credit commensurate with the extent of their participation in the activity.

Verification of Attendance

Will be provided to all professionals.

Registration

Physicians\$150.00

Allied Health Professionals\$75.00

*Residents, Fellows, Students\$50.00

* Letter from Program Director is required.

A charge of an additional \$50 will be incurred for on-site registration.

Meeting Location

New York Marriott Marquis
Marquis Ballroom B, 9th Floor
1535 Broadway (46th & Broadway)
New York, NY 10036
212-398-1900
www.nymarriottmarquis.com

Special Needs

Mount Sinai School of Medicine is in full compliance with provisions of the Americans with Disabilities Act (ADA) and is accessible for individuals with special needs. If you would like to attend this conference and require any special needs or accommodations, please contact The Page and William Black Post-Graduate School of Medicine at 212-731-7950.

Cancellations

All cancellations must be confirmed in writing to The Page and William Black Post-Graduate School by September 17, 2007 for tuition refund. An administrative fee of \$25 will be retained. No refunds will be made on cancellations after this date or for “no shows.”

Conference Information

Please call the Office of CME at 212-731-7950 or email cme@mssm.edu.

Agenda

7:30 – 8:00 am

8:00 – 8:10 am

8:10 – 8:40 am

8:40 – 9:10 am

9:10 – 9:40 am

9:40 – 9:55 am

9:55 – 10:10 am

10:10 – 10:25 am

10:25 – 10:40 am

10:40 – 11:10 am

11:10 – 11:40 am

11:40 – 11:55 am

11:55 – 1:00 pm

1:00 – 1:30 pm

1:30 – 2:00 pm

2:00 – 2:20 pm

2:20 – 2:40 pm

2:40 – 3:10 pm

3:10 – 3:40 pm

Registration and Continental Breakfast

Welcome Address

Maria L. Padilla, MD

Spectrum and Causes of Fibrosing Lung Diseases

Maria L. Padilla, MD

COPD: An Evidence-Based Approach to Decision Making

Fernando Martinez, MD

Advanced Lung Disease: Beyond the Fibrosis

Steven Nathan, MD

IPF and GERD

Virginia R. Litle, MD

Quality of Life in Advanced Lung Disease

Nathan Goldstein, MD

Panel Discussion

Break: Refreshments and Exhibits

High Resolution CT Imaging of Diffuse Lung Disease

David Naidich, MD

Pathology of Interstitial Lung Disease: A Guide to Diagnosis and Management

William D. Travis, MD

Panel Discussion

Lunch and Exhibits

Lung Transplantation:

Overview, Indications, Evaluation and New Allocation System

Maria L. Padilla, MD

Lung Transplantation: Surgical Treatment

Scott J. Swanson, MD

Medical Complications of Lung Transplantation

Lori Shah, MD

Postoperative Complications: Airway Stenoses and GERD

Virginia R. Litle, MD

Treatment of Emphysema: Bronchoscopy and Lung Volume Reduction

Timothy J. Harkin, MD

Panel Discussion

Advanced Lung Disease and Lung Transplantation Symposium

Saturday, September 29, 2007
New York Marriott Marquis, New York, NY

REGISTRATION FEES:

Practicing Physicians\$150.00

Allied Health Professionals\$75.00

*Residents, Fellows, and Students\$50.00

* Letter from Program Director is required.

A charge of an additional \$50 will be incurred for on-site registrations

LAST NAME	FIRST NAME	(MD, RN, etc.)
ADDRESS		
CITY	STATE	ZIP
TELEPHONE	FAX	
EMAIL	SPECIALTY	
INSTITUTION/AFFILIATION		

Email confirmation? Yes No

Note: All cancellations must be confirmed in writing to The Page and William Black Post-Graduate School by September 17, 2007 for tuition refund. An administrative fee of \$25 will be retained. No refunds will be made on cancellations after this date or for “no shows.”

THREE WAYS TO REGISTER

Online: To register online go to www.mssm.edu/cme/courses/lungdisease

Fax this form with your Visa, M/C or AE # to 212-731-7930.

Mail this form with your check to:

Attention: Alfie Truchan
Mount Sinai School of Medicine
The Page and William Black Post-Graduate School
One Gustave L. Levy Place, Box 1193
New York, NY 10029-6574

Enclosed is my check for \$_____ payable to **Mount Sinai Post Graduate School.**

Bill my credit card \$_____

MasterCard Visa American Express

CARD NUMBER EXP. DATE

CARDHOLDER'S NAME (PLEASE PRINT)

SIGNATURE

FOR CONFERENCE INFORMATION

Please call the Office of CME at 212-731-7950 or cme@mssm.edu.