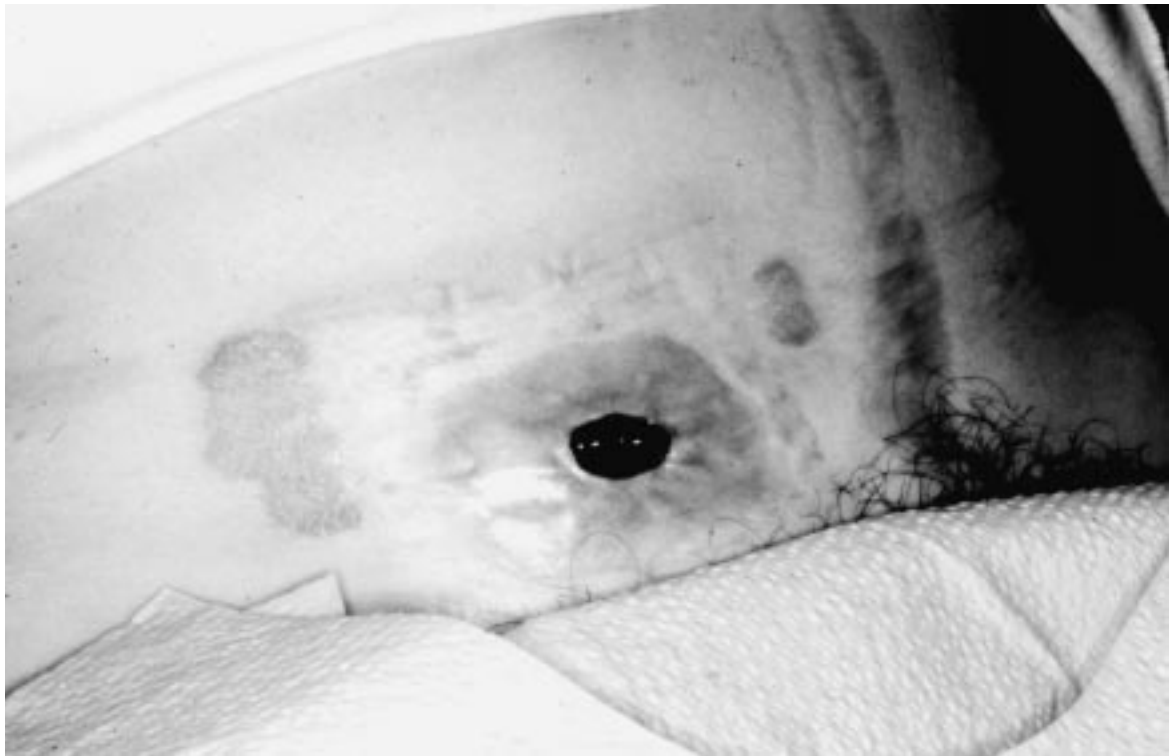


Dermatology *Notes*

Psoriasis and Crohn's Disease



PERISTOMAL IRRITATION IS COMMON, but a sharply demarcated, erythematous scaling plaque in the peristomal area should trigger a search for psoriasis, especially in patients with Crohn's disease. The association between these two disorders is not widely known, but has been reported.

—Donald Rudikoff, M.D., Jacob Baral, M.D., and Mark Lebwohl, M.D.