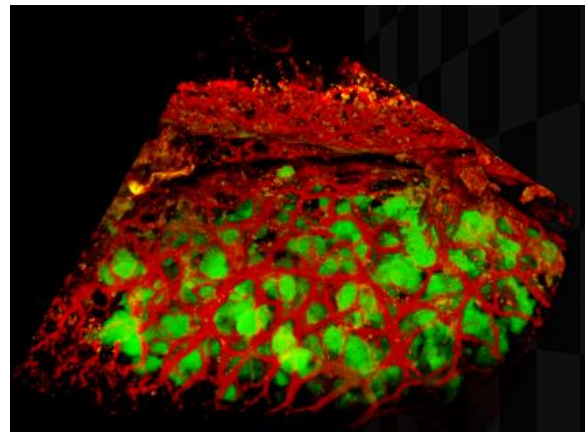


BioRad Radiance 2000 Multiphoton



Tumor GFP & SHG collagen image courtesy of Suvendu Das, [Mihaela Skobe Lab](#).

This multiphoton system is a fixed-stage upright microscope with a Ti:sapphire laser pumped by a 10W Verdi laser tunable from 720nm to 920nm, and features a two-channel external detection system. This system also has a confocal system with a Krypton-Argon laser (488nm and 568nm) and a HeNe laser (647nm). Multiphoton microscopy is optimal for imaging thick tissue and whole mount specimens either in vivo or fixed. It can also be used for the visualization of collagen using second harmonic generation imaging. In addition, the stage can be modified for live animal imaging of mice and rats.

Multiphoton Specifications

Laser Lines	External Detectors (DDS)			Bit Depth	Resolution
Tunable Range:	Emission 1	Dichroic	Emission 2	8 and 16	max: 1280x1024
720-920nm	HQ450/80	DC500LP	HQ515/30		min: 128x128
	HQ515/30	DC560LP	HQ620/100		

Objectives

Magnification	Immersion	NA
10x	air	0.4
20x	air	0.75
60x	oil	1.4
60x	water	1.2
10x (dipping)	water	0.3
20x (dipping)	water	0.95
40x (dipping)	water	0.8
60x (dipping)	water	0.9
100x (dipping)	water	1.0