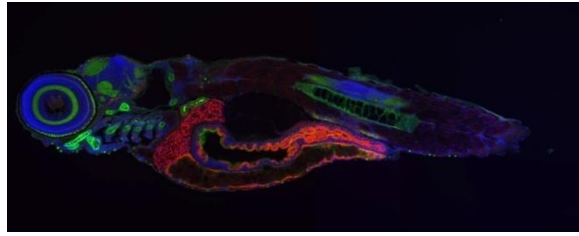


Zeiss Axioplan2



Zebrafish composite image courtesy of Ayca Cinaroglu, [Kirsten Sadler Lab](#).

This is an upright epi-fluorescence microscope controlled by [Zeiss AxioVision software](#). This microscope has a Zeiss AxioCam MRm camera for capturing fluorescent dyes and a Q-imaging MP3.3 RTV color camera for capturing full color brightfield images. This microscope also has an ApoTome unit that uses "structured illumination" to perform real-time deconvolution of tissues and cells. Furthermore, it can perform transmitted light imaging techniques such as darkfield, polarized light and DIC.

Fluorescence Filters

Fluorophore	Excitation	Beam Splitter	Emission
DAPI	D350/50x	400DCLP	D460/50m
FITC	BP450-490	FT510	BP515-565
Texas Red	D560/40x	595DCLP	D630/60m
Cy5	BP640/30	FT660	BP690/50
CFP	D436/20x	455DCLP	D480/40m
YFP	HQ500/20x	Q515LP	HQ535/30m
Spectrum Orange*	HQ548/20x	Q565LP	HQ580/14m

Objectives

Magnification	Immersion	NA
2.5x*	air	0.075
5x*	air	0.15
10x	air	0.3
20x	air	0.75
40x	air	0.75
40x	oil	1.3
63x	oil	1.4
100x	oil	1.3

*available upon request