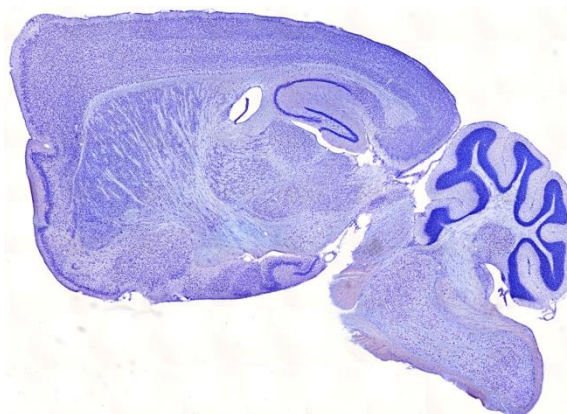


Zeiss Axioplan2IE



Mouse brain montage image courtesy of Jing Wang, [Zhenyu Yue Lab](#).

This is an automated upright epi-fluorescence microscope controlled by [Zeiss AxioVision software](#). This microscope has a Zeiss AxioCam MRm camera for capturing fluorescent dyes and a Zeiss AxioCam MRc camera for capturing full color brightfield images. It utilizes an encoded motorized stage that automates montage acquisition and stitching for high resolution images of large areas. Furthermore, it can perform transmitted light imaging techniques such as DIC and darkfield.

Fluorescence Filters

Fluorophore	Excitation	Beam Splitter	Emission
DAPI	D350/50x	T400LP	ET460/50m
FITC	ET470/40x	T495LP	ET525/50m
TRITC	ET545/30x	T570LP	ET620/60m
CY5	ET620/60x	T660LPXR	ET700/75m
CFP	ET436/20x	T455LP	ET480/40m
YFP	ET500/20x	T515LP	ET535/30m
Spectrum Orange*	HQ548/20x	Q565LP	HQ580/14m

Objectives

Magnification	Immersion	NA
10x	air	0.5
20x	air	0.8
40x	air	0.75
40x	oil	1.3
63x	oil	1.4
100x	oil	1.4

*available upon request